

# N7000/1/2/3A InfiniiMax III+ Probes

## Locate the user's guide

Download the user's guide from the probe's product page at [www.keysight.com](http://www.keysight.com). The user's guide is also available in Keysight's Probe Resource Center (PRC) which is available at [www.keysight.com/find/PRC](http://www.keysight.com/find/PRC). The PRC is an application that runs on a PC, Mac, or iOS device.

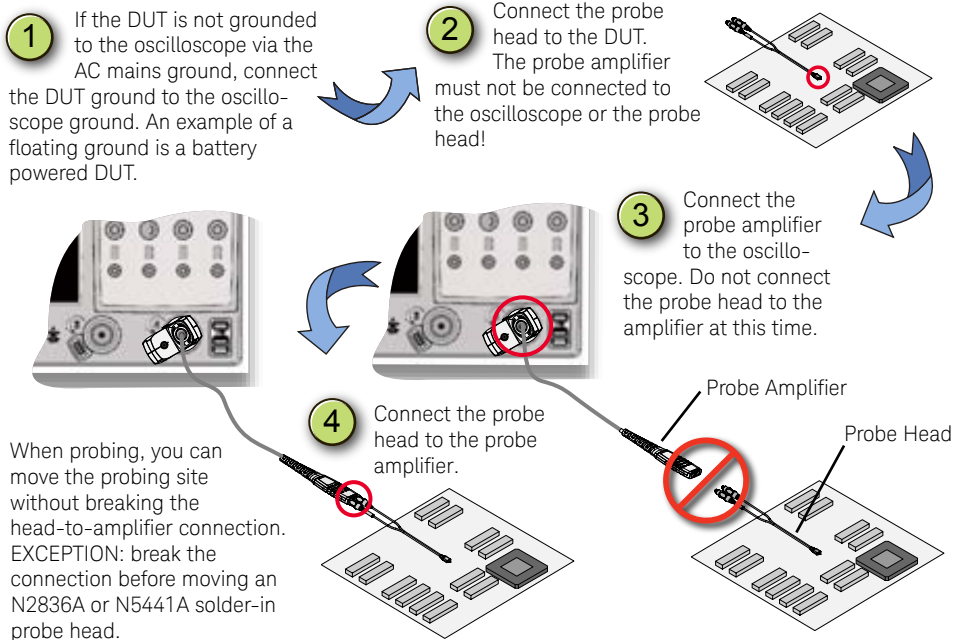
## Additional Accessories

- N5477A for connecting the N7000/1/2/3A probes to Infiniium 86100D DCA-X sampling oscilloscope or other RF instruments.
- N2787A 3D probe positioner for holding the browser or probe amplifier.
- Strain relief putty (N5439-65201).
- N5450B Extreme Temperature Extension Cable. See user's guide for more information.
- E2655C or N5443A PV Fixture. Required to calibrate, deskew, and verify the performance of the probe. Properly positions the probe for performance verification testing.

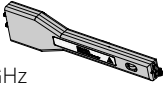
## CAUTION. Risk of damage due to electrostatic discharge (ESD)

This probe is a high-performance device that ESD can quickly and imperceptibly damage or destroy. Always work at a static-safe workstation and wear a wrist strap when handling probe components. Refer to the User's Guide. To connect the probe to the oscilloscope, follow these four steps.

When disconnecting the probe amplifier from the scope, always disconnect the probe head from the amplifier first.

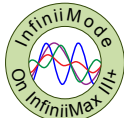
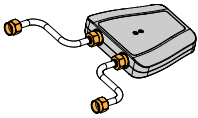


## 1. N5445A Differential Browser



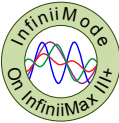
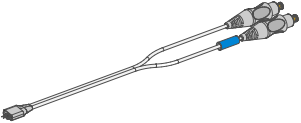
- BW up to 30 GHz
- Replacement tips, ground blades and ground screws available.
- Best handheld probe for differential and single-ended signals
- Spring-loaded tips and variable spacing (0.5 mm to 3.1 mm, use thumbwheel to adjust)
- Accessory: 4 replacement tips (N5476A)
- Accessory: 4 replacement ground blades (N5445-68700)
- Accessory: 4 replacement ground screws (N5445-68701)
- Using the N2787A 3D probe positioner with the N5445A browser probe head reduces the chance of browser tips breakage and ensures that the tips maintain solid contact.

## 4. N5444A 2.92 mm/3.5 mm SMA Head



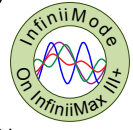
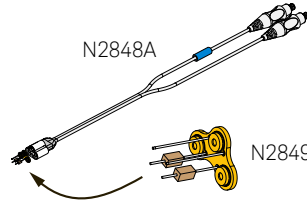
- BW up to 28 GHz
- Connect two 2.92 mm, 3.5 mm, SMA cables to make a differential measurement on a single oscilloscope channel.
- Accessory: N5448A 2.92 mm flexible cables (25 cm) to extend the cable length.

## 5. N2836A InfiniiMode Solder-In Probe Head



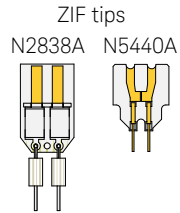
- InfiniiMode. Differential, common mode, single-ended measurements without changing connections.
- BW up to 26 GHz, variable span
- Economical, semi-permanent connection
- Replacement axial resistors: N2836-68701

## 2. N2848A QuickTip probe head



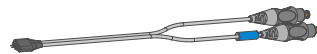
- InfiniiMode. Differential, common mode, single-ended measurements without changing connections.
- BW: 16 GHz Diff, 10 GHz CM, 10 GHz SE
- Easy, secure magnetic connection between head and tip.
- Extreme temperature environments.
- Accessory: 4 QuickTips (N2849A)

## 3. N5439A ZIF Probe Head



- N2838A: 25 GHz BW, normal sensitivity
- N5440A: 28 GHz BW, normal sensitivity
- N5447A: not compatible with InfiniiMax III+ amplifiers
- 5 PC Board ZIF tips (N2838A)
- 5 Ceramic ZIF tips (N5440A)
- Economical replaceable tip form factor
- Variable spacing
- N2838A replacement axial resistors: N2836-68701

## 6. N5441A Solder-In Probe Head



- BW up to 16 GHz, variable span
- Economical, semi-permanent connection
- Extra wire accessory: 7 mil (01169-81301), 5 mil (01169-21306).

